

A-dec 3000

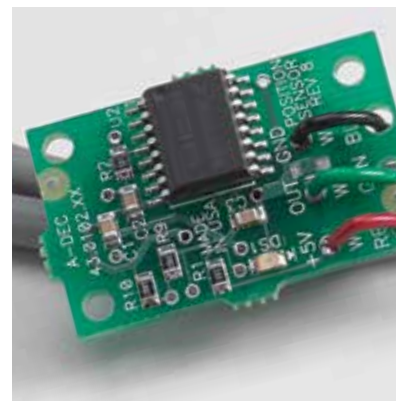


 a dec[®]

The A-dec Difference

Built for Life

At A-dec, no detail is too small, right down to the bolts that go into our products. That's why we manufacture a large majority of our finished dental equipment from raw materials: an essential factor in ensuring quality. Because while these parts may not be visible to the eye, they make the difference in the life, comfort and functionality of each and every product that bears our name. And to your business, that's everything.



Control block – Patented design promotes clean treatment water with every activation.

Lift cylinder – A-dec built and engineered with robust hydraulics and fewer parts.

Chair position sensor – A-dec technology uses precise electronic sensors and digital signals.



a|dec
5 YEAR
WARRANTY





A-dec 300: Evolved

Design

A solid baseplate is the foundation for a sturdy chair. Along with sure footing, the A-dec 300 quietly and smoothly positions patients with a hydraulic lift cylinder that's engineered for a 20 year life.

Value

Designed as a modular solution, A-dec 300 is a whole system that lets you pick and choose the features you want, within the price point you need.

Flexibility

Traditional or Continental, the choice is yours. Whether you select a dedicated left/right delivery or ambidextrous Radius® configuration, handpiece and ancillaries are always within natural reach.

Comfort

Pressure mapped, contoured surfaces and virtual pivot back ensure a relaxed and supported patient experience. Comfortably accommodates patients up to 181 kg. (400 pounds).

Access

While your patient rests comfortably, cradled in a dual-articulating headrest, your access is optimized with a slim profile and ultra-thin backrest. Engineered from years of experience, this combination encourages better positioning for you, while enhancing access to the oral cavity.





Ergonomic and Economic

Who says ultimate comfort isn't attainable? Every patient chair, and dentist or assistant stool we design, is backed by decades of research, dialogue, tests and improvements. We never stop looking at every simple curve, smooth line and inherent contour, to make sure it delivers ultimate efficiency and comfort. Rest assured: The affordable A-dec 300 is no exception.

Works the Way You Do

Pedestal or Radius, you choose. Both options place instrumentation within reach for uninterrupted patient care.

A-dec 300

Pedestal Support Center

Traditional or Continental delivery infuses technology into your surgery. Dedicated left or right delivery offers easy amalgam separator access and a sleek, contoured floor box that eliminates exposed hardware.





A-dec 300 Radius System

Switch between right or left-handed operators with ease. Single- or dual-Radius mounting rotates around the front of the chair for better patient access during procedures.



Lever Foot Control

A-dec's lever foot control option keeps you in control. Intuitive wet/dry side-to-side operation and chip blower/accessory button lets you focus on patient treatment without looking away. With minimal foot movement, you get precise modulation of both electric and pneumatic handpieces.

So Many Choices



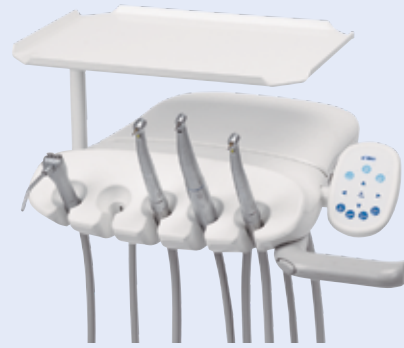
Sewn upholstery with armrests



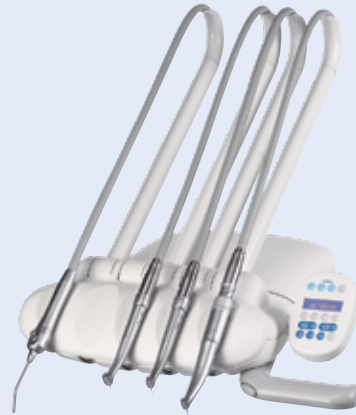
Formed upholstery without armrests

Upholstery and Armrests

It all starts with a great chair. You have plenty of options, from plush sewn or easy-to-clean formed upholstery, to optional two-position armrests or no armrests.



Traditional



Continental

Delivery Systems

How do you and your staff work? Traditional and Continental delivery systems can integrate a quad-volt intraoral light source and two ancillaries.



Standard touchpad



Deluxe touchpad

Touchpad

Fingertip access simplifies chair adjustments and provides quick access to dental light and cuspidor control. Optional deluxe touchpad adds controls for integrated clinical devices such as electric motors, cameras, and scalers.



Disc foot control



Lever foot control

Foot Controls

Disc style with chip blower option—or A-dec lever style for precise modulation of electric and pneumatic handpieces.



Fixed glass cuspidor



Rotating vitreous china cuspidor

Cuspidors

What's your preference, glass or vitreous china? Fixed or rotating? Both bowls include timed cup fill and bowl rinse functions.



3-position holder



4-position holder



Dual 2-position holder

Assistant's Holders

Place the assistant's clinical devices right where they are needed most. Adjustable 3- or 4-position holders are available as a chair mount, cuspidor mount or telescoping arm.



A-dec 300 LED



A-dec 500 LED

Dental Lights

Accurate lighting is essential. A-dec LED lights provide balanced intensity and a uniform light pattern without shadows. Automatic on/off when chair moves to entry or exit position.



Radius monitor mount



Light monitor mount



Light monitor mount with link arm

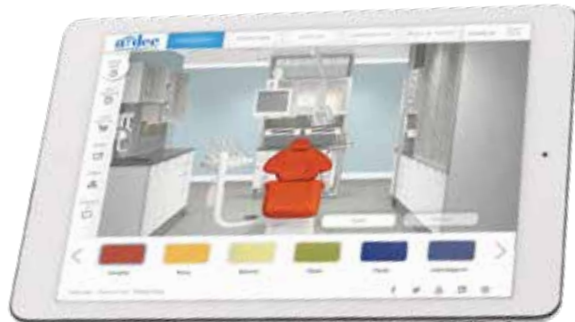
Monitor Mounts

Consult. Educate. Review. Monitor mounts pivot to accommodate viewing from the seated and supine positions. Tailor your options, including locking style or floating pivot, positioning handle, and multiple mount locations.

Formed Upholstery



Color makes all the difference in creating an environment that reflects you. That's why A-dec offers a wide variety of colors and selected options to coordinate formed and sewn upholsteries.



**Order Your Samples at
a-dec.com/InspireMe**

Sewn Upholstery



Actual colors may vary. See your authorized A-dec Dealer for color samples and the most current product information.

Specifications

A-dec 311 Dental Chair

Range of lift height	349 mm to 800 mm (13.75" to 31.5"); Low point 375 mm (14.75") when dual mounting
Thin flexible backrest	32 mm (1.25"), formed
Drive system	Hybrid drive (electromechanical tilt, hydraulic base)
Chair back and base stop switch	Yes, stops downward movement when obstruction is detected
Headrest	Dual-articulating and gliding (knob style)
Integrated 300-watt power supply	Yes
Foot switch	Optional
Mounting capability	Floating - 2" post mount, pedestal, or Radius (single or dual mounting)
Upholstery options	Sewn or formed

Delivery Systems

	A-dec 300 Continental	A-dec 300 Traditional
Control block	Standard 3-position, optional 4-position	Standard 3-position, optional 4-position
Left/right conversion	Yes	Yes
Tubing options	Vinyl or silicone	Vinyl or silicone
Handpiece holder positions	4	4
Brake handle(s)	1 standard, 2nd optional	1 standard, 2nd optional
Touchpad options	None, standard or deluxe	None, standard or deluxe
Quad-voltage intraoral light source	Optional	Optional
Foot control	Standard, chip blower or lever	Standard, chip blower or lever
Arm system	Balanced flexarm with air brake A-dec 333 - Radius mount A-dec 335 - Support mount	Balanced flexarm with air brake A-dec 332 - Radius mount A-dec 334 - Support mount Manual height adjustment A-dec 336 - Radius mount









Backed by a 5-year warranty.

Meet the Family

Whether the premium top-of-the-line A-dec 500, contemporary and versatile A-dec 400, or proven and budget friendly A-dec 300, our complete line of dental equipment offers a solution to fit your requirements. Contact A-dec to learn more about our suite of dental equipment including chairs, stools, delivery and support systems.



A-dec Headquarters

2601 Crestview Drive
Newberg, Oregon 97132 USA
Tel: 1.800.547.1883 within USA/CAN
Tel: 1.503.538.7478 outside USA/CAN
Fax: 1.503.538.0276
a-dec.com

A-dec Australia

Tel: 1.800.225.010 within AUS
Tel: +61.(0)2.8332.4000 outside AUS

A-dec China

Tel: 400.600.5434 within CN
Tel: +86.571.89026088 outside CN

A-dec United Kingdom

Tel: 0800.233285 within UK
Tel: +44.(0).24.7635.0901 outside UK

A-dec, the A-dec logo, A-dec Inspire, Cascade, Century Plus, Continental, Decade, ICX, ICV, Performer, Preference, Preference Collection, Preference ICC, and Radius are trademarks of A-dec Inc. and are registered in the United States and other countries. A-dec 500, A-dec 400, A-dec 300, A-dec 200, and reliablecreativesolutions are also trademarks of A-dec Inc. None of the trademarks or trade names in this document may be reproduced, copied, or manipulated in any manner without the express, written approval of the trademark owner.

Certain touchpad symbols are proprietary to A-dec Inc. Any use of these symbols, in whole or in part, without the express written consent of A-dec Inc., is strictly prohibited.

The colors and products shown may vary from the actual materials and are subject to change without notice. Please see your authorized A-dec dealer for accurate color samples and the most current product information.

©2018 A-dec Inc. All rights reserved.
85.6152.25/PP/2.5M/10-18/Rev E