

#whdentalwerk



video.wh.com

Now at
your dealer
or **wh.com**



EM-12 L

electric motor

**Functionality
meets comfort.**

Powerful. Versatile. Small.



Perfect balance of performance and ergonomics

The EM-12 L brushless electric motor offers impressive functionality and comfort. It is particularly small and surprisingly light, is comfortable to hold and in addition to the consistent high power, also scores extra points with its features such as LED technology, long service life and quiet operation.



Particularly small

The comparison shows:
The EM-12 L is no larger than a matchbox.

Compatible

ISO Short coupling:
Can be used with all conventional straight and contra-angle handpieces, including Short Editions.



Constantly high power

High performance, reliable durability and a broad spectrum of speeds from 100 to 40,000 rpm.

25% lighter, 15% shorter

Combine the EM-12 L with the contra-angle handpieces from the Synea Vision Short Edition range for a considerably shorter and noticeably lighter complete system. This makes it possible to satisfy the highest ergonomic demands and effectively avoid fatigue, even when working for extended periods of time.



Optimally balanced

Short, slim and light: ideal weight distribution means the EM-12 L is perfectly balanced in your hand.



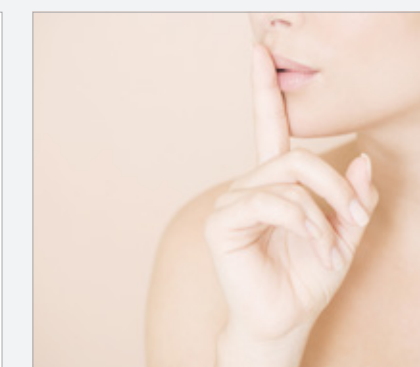
Improved view with LED light

The LED technology integrated in the motor lights the treatment site with daylight-quality illumination.



Low maintenance and preserved value

The long-lasting brushless drive means reduced service and maintenance costs combined with increased service life.

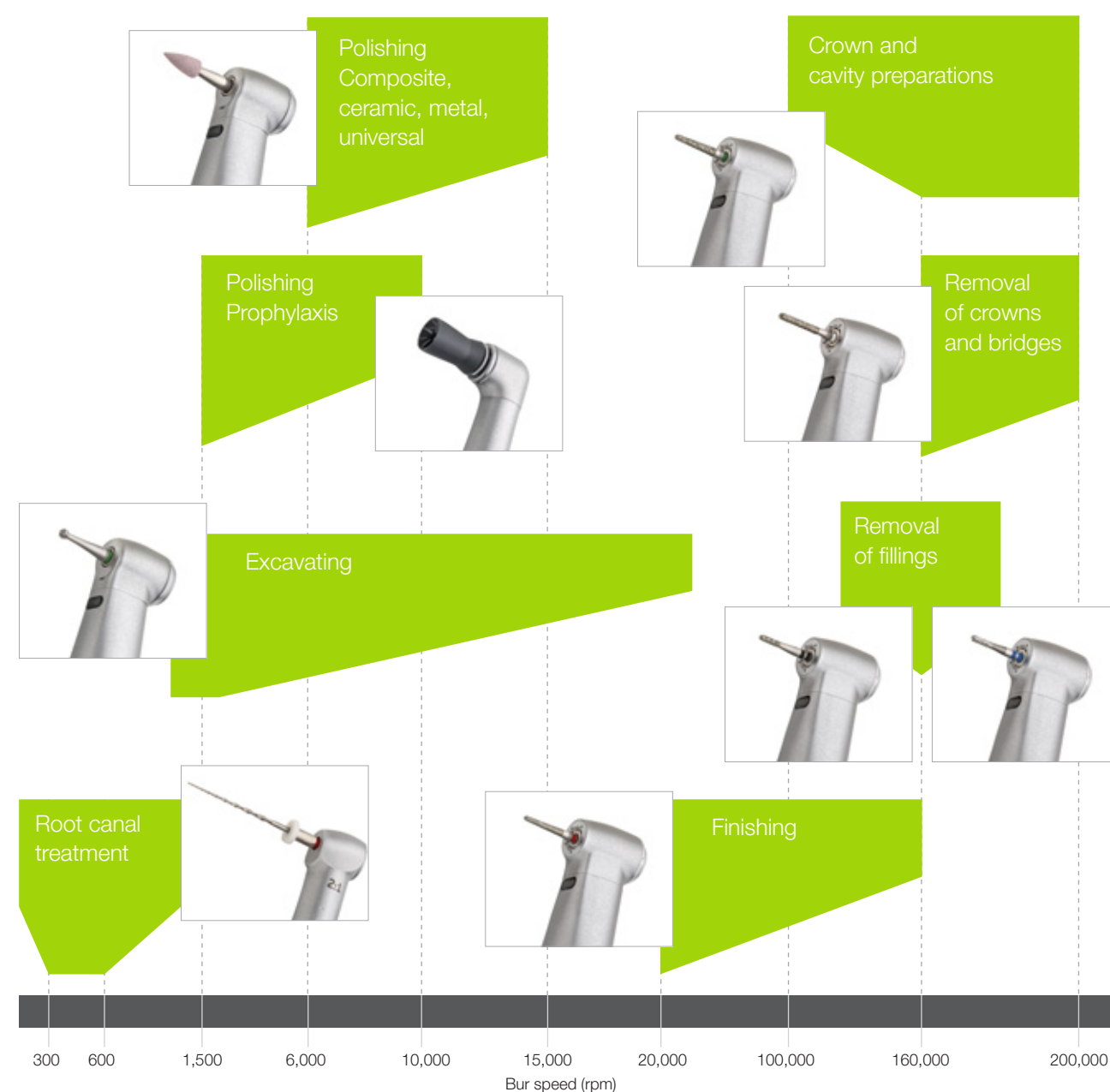


Quiet and low vibration

Sensor-controlled drive technology makes it particularly quiet and largely free from vibration.

Range of applications with electric power

You can prepare, excavate, polish and even perform endodontic treatment with the endo function: Simply select the transmission instrument, set the speed and work with the recommended bur speeds. For optimal treatment results throughout the varied spectrum of applications.



An ingenious system

The W&H EM-12 L electric motor can be optimally integrated into your personalised workflow. Choose the smart Add-on, with flexible installation options or utilise the advantages of a Built-in Solution for convenient full integration in your dental unit.



Add-on

If you intend to use the Add-on as a table-top unit, the sterilizable tray offers an additional surface for resting instruments on.



Removable display

The display can be removed from the Add-on and positioned independently of the control module.



Installation options

You can also install the Add-on below or on the side of the table used for your dental unit.



Built-in Solution

Selected unit manufacturers offer the W&H EM-12 L electric motor as a fully integrated drive solution within the scope of a complete system. It can be controlled simply and conveniently via your dental unit's control panel. Ask W&H or your unit manufacturer about the EM-12 L as a Built-in Solution.

The choice is yours

With or without the endo function, the EM-12 L electric motor is always reliable and capable. Equip your treatment unit with innovative drives and new functionalities from W&H. Perfectly suited: W&H straight and contra-angle handpieces for a wide range of applications.



Built-in motor with control knob
The EM-12 L for Restoration & Prosthetics and Prophylaxis has a speed range of 2,000 to 40,000 rpm.



Built-in motor with display
Simple operation via the display enables precise speed setting.



Built-in set with two motors
One display and two motors mean you have at your disposal the perfect contra-angle handpiece for both low and high speed applications.



Endo systems for all situations
W&H endo systems for automated processing of the root canal for even safer and more precise preparation.



Integrated endo function
Expand your range of treatments: The integrated EM-12 L with endo function offers a range of speeds between 100 and 40,000 rpm. The electronic torque control minimizes the risk of file breakage.

Technical data



Electric motor	EM-12 L
Speed range*:	100 – 40,000 rpm
Maximum power:	59 Watt
Length (effective, without ISO connection):	31.55 mm
Weight:	57 g
Noise level:	43 dB (A)
Light:	LED
Spray:	Internal
Cooling air:	6 – 8 NI/min
Direction of rotation:	Forward/reverse operation
Instrument coupling:	ISO 3964 (short) compatible
Warranty:	24 months

* Speed range depends on motor/system version



Add-on control for EM-12 L	MF-100
Speed range:	2,000 – 40,000 rpm
Mains voltage:	100 – 240 V, 47 – 63 Hz
Dimensions (height x width x depth):	92 x 156 x 211 mm
Weight:	1.06 kg
Warranty:	24 months

The perfect accessories for MF-100 (optionally available)

- Supports: Fastening options for flexible installation and customised positioning.
- Tray: The practical tray for your instruments can be disinfected and sterilized.



EXPERT TIP
Dr. Sergio Ariosto Hernández Delgado
Mexico City, Mexico

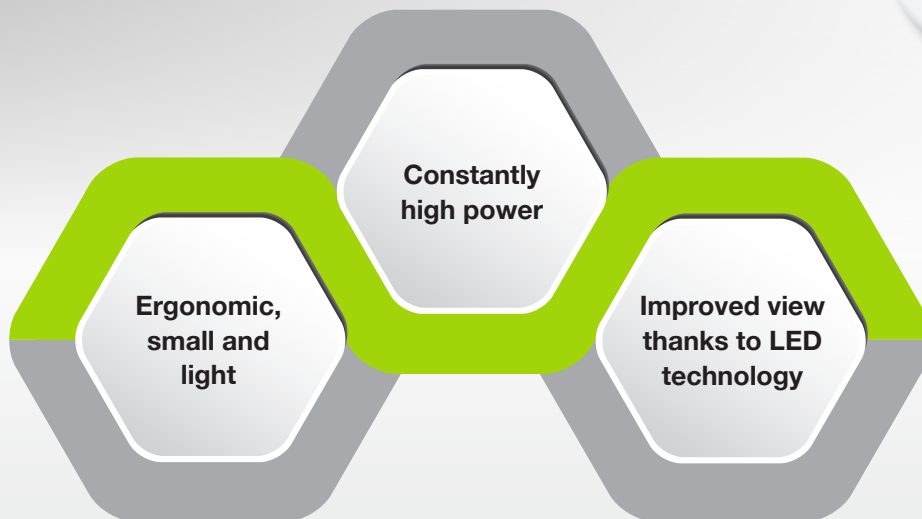
An electric motor with high-speed contra-angle handpieces is the best choice for the preparation of CAD/CAM treatments:

»The most important benefits that I can comment on from my own experience are the following: Control of the preparation, precise, neat and uniform margins that are easy to scan. Less vibration compared with turbines, thus less fatigue and force during the preparation procedure.«

Read the full interview at wh.com

EM-12 L electric motor

Functionality meets comfort



W&H Dentalwerk Bürmoos GmbH
Ignaz-Glaser-Straße 53, Postfach 1
51111 Bürmoos, **Austria**
t +43 6274 6236-0
f +43 6274 6236-55
office@wh.com
wh.com

Pictures are for illustrative purposes only. Additional equipment and accessories shown are not included as standard.

20455 AEN Rev. 002 / 31.01.2019
Subject to alterations